



Summit Strategies Group

8182 Maryland Avenue, 6th Floor

St. Louis, Missouri 63105

314.727.7211

El Paso Firemen & Policemen's Pension Fund

Flash Report

February 29, 2016

El Paso Firemen and Policemen's Pension Fund

Composite Asset Allocation & Performance

February 29, 2016

	Asset \$	Asset %	Performance(%)					
			1 Month	3 Month	CYTD	1 Year	3 Year	5 Year
Total Fund Composite	1,190,002,814	100.00	-0.37	-4.88	-3.74	-6.22	4.93	4.90
<i>Total Fund Policy Index</i>			<i>-0.24</i>	<i>-5.08</i>	<i>-3.88</i>	<i>-6.65</i>	<i>4.33</i>	<i>4.79</i>
Excess Return			-0.13	0.20	0.14	0.43	0.60	0.11
Fire Plan	482,422,636	40.54	-0.37	-4.88	-3.74	-6.22	4.93	4.90
Police Plan	707,725,613	59.47	-0.37	-4.88	-3.74	-6.22	4.93	4.90
Total Fund ex Alternatives	1,060,381,593	89.11	-0.47	-5.58	-4.22	-7.76	4.31	4.56
Total Equity Composite	700,707,815	58.88	-0.76	-8.35	-6.60	-10.87	5.67	5.06
<i>Total Equity Policy Index</i>			<i>-0.76</i>	<i>-9.44</i>	<i>-7.45</i>	<i>-13.19</i>	<i>3.76</i>	<i>4.11</i>
Excess Return			0.00	1.09	0.85	2.32	1.91	0.95
US Equity Composite	363,150,042	30.52	0.49	-7.65	-5.59	-6.92	10.30	9.31
<i>US Equity Policy Index</i>			<i>-0.03</i>	<i>-9.02</i>	<i>-6.43</i>	<i>-9.54</i>	<i>9.08</i>	<i>8.83</i>
Excess Return			0.52	1.37	0.84	2.62	1.22	0.48
Large Cap Equity Composite	278,130,384	23.37	0.45	-6.80	-5.35	-5.78	11.14	10.19
<i>Russell 1000 Index</i>			<i>-0.03</i>	<i>-7.12</i>	<i>-5.41</i>	<i>-7.21</i>	<i>10.43</i>	<i>9.92</i>
Excess Return			0.48	0.32	0.06	1.43	0.71	0.27
Small Cap Equity Composite	85,019,658	7.14	0.63	-10.35	-6.35	-10.45	7.77	6.82
<i>Russell 2000 Index</i>			<i>-0.00</i>	<i>-13.38</i>	<i>-8.80</i>	<i>-14.97</i>	<i>5.72</i>	<i>6.11</i>
Excess Return			0.63	3.03	2.45	4.52	2.05	0.71
International Equity Composite	337,557,773	28.37	-2.08	-9.09	-7.67	-14.78	1.13	0.85
<i>International Equity Policy Index</i>			<i>-1.50</i>	<i>-9.87</i>	<i>-8.47</i>	<i>-16.81</i>	<i>-1.48</i>	<i>-0.59</i>
Excess Return			-0.58	0.78	0.80	2.03	2.61	1.44
Fixed Income Composite	357,254,762	30.02	0.10	0.18	0.66	-1.29	1.20	3.24
<i>Barclays Aggregate</i>			<i>0.71</i>	<i>1.77</i>	<i>2.10</i>	<i>1.50</i>	<i>2.22</i>	<i>3.60</i>
Excess Return			-0.61	-1.59	-1.44	-2.79	-1.02	-0.36
Alternatives Composite	129,621,221	10.89	0.41	1.39	0.50	9.52	11.22	9.19
<i>Alternatives Policy Index</i>			<i>-0.00</i>	<i>1.23</i>	<i>-0.14</i>	<i>9.39</i>	<i>12.64</i>	<i>11.39</i>
Excess Return			0.41	0.16	0.64	0.13	-1.42	-2.20
<i>Alternatives Allocation Index</i>			<i>-0.00</i>	<i>1.56</i>	<i>-0.12</i>	<i>10.34</i>	<i>12.48</i>	<i>11.48</i>

El Paso Firemen and Policemen's Pension Fund

Composite Asset Allocation & Performance

February 29, 2016

	Asset \$	Asset %	Performance(%)					
			1 Month	3 Month	CYTD	1 Year	3 Year	5 Year
Private Equity Composite	51,254,814	4.31	-0.00	-0.45	-0.29	5.41	13.10	10.46
Real Estate/Real Assets Composite	78,366,407	6.59	0.67	2.64	1.02	12.14	10.20	8.49
Total Cash Composite	2,419,016	0.20	0.05	0.15	0.11	0.39	0.27	0.30
<i>90 Day US Treasury Bill</i>			<i>0.02</i>	<i>0.04</i>	<i>0.01</i>	<i>0.03</i>	<i>0.04</i>	<i>0.05</i>
Excess Return			0.03	0.11	0.10	0.36	0.23	0.25

El Paso Firemen and Policemen's Pension Fund

Composite Asset Allocation & Performance

February 29, 2016

	Performance(%)										
	CYTD	2015	2014	2013	2012	2011	2010	2009	2008	2007	2006
Total Fund Composite	-3.74	0.57	4.60	17.78	11.80	-1.74	11.67	26.26	-24.93	11.59	16.50
<i>Total Fund Policy Index</i>	<i>-3.88</i>	<i>0.03</i>	<i>5.13</i>	<i>15.78</i>	<i>13.22</i>	<i>-1.57</i>	<i>12.36</i>	<i>24.28</i>	<i>-26.98</i>	<i>7.80</i>	<i>14.98</i>
Excess Return	0.14	0.54	-0.53	2.00	-1.42	-0.17	-0.69	1.98	2.05	3.79	1.52
Fire Plan	-3.74	0.57	4.60	17.78	11.80	-1.74	11.67	26.26	-24.93	11.59	16.50
Police Plan	-3.74	0.57	4.60	17.78	11.80	-1.74	11.67	26.26	-24.93	11.59	16.50
Total Fund ex Alternatives	-4.22	-0.31	4.11	18.04	11.92	-1.85	11.78	-	-	-	-
Total Equity Composite	-6.60	-0.22	3.47	28.51	14.42	-5.74	13.39	36.47	-41.22	13.58	23.05
<i>Total Equity Policy Index</i>	<i>-7.45</i>	<i>-2.11</i>	<i>3.06</i>	<i>25.90</i>	<i>17.10</i>	<i>-6.91</i>	<i>14.68</i>	<i>34.23</i>	<i>-40.88</i>	<i>8.23</i>	<i>20.95</i>
Excess Return	0.85	1.89	0.41	2.61	-2.68	1.17	-1.29	2.24	-0.34	5.35	2.10
US Equity Composite	-5.59	1.57	10.77	35.82	14.21	-0.50	17.90	31.98	-36.64	8.70	18.19
<i>US Equity Policy Index</i>	<i>-6.43</i>	<i>-0.64</i>	<i>10.79</i>	<i>34.83</i>	<i>16.43</i>	<i>-0.18</i>	<i>19.29</i>	<i>28.20</i>	<i>-36.41</i>	<i>2.97</i>	<i>16.66</i>
Excess Return	0.84	2.21	-0.02	0.99	-2.22	-0.32	-1.39	3.78	-0.23	5.73	1.53
Large Cap Equity Composite	-5.35	3.11	12.57	33.65	14.23	1.77	14.91	32.59	-37.25	7.44	16.15
<i>Russell 1000 Index</i>	<i>-5.41</i>	<i>0.92</i>	<i>13.24</i>	<i>33.11</i>	<i>16.42</i>	<i>1.50</i>	<i>16.10</i>	<i>28.43</i>	<i>-37.60</i>	<i>5.77</i>	<i>15.46</i>
Excess Return	0.06	2.19	-0.67	0.54	-2.19	0.27	-1.19	4.16	0.35	1.67	0.69
Small Cap Equity Composite	-6.35	-3.19	6.54	40.98	14.07	-5.92	25.05	30.14	-34.94	12.55	20.19
<i>Russell 2000 Index</i>	<i>-8.80</i>	<i>-4.41</i>	<i>4.89</i>	<i>38.82</i>	<i>16.35</i>	<i>-4.18</i>	<i>26.85</i>	<i>27.17</i>	<i>-33.79</i>	<i>-1.57</i>	<i>18.37</i>
Excess Return	2.45	1.22	1.65	2.16	-2.28	-1.74	-1.80	2.97	-1.15	14.12	1.82
International Equity Composite	-7.67	-2.02	-3.38	21.26	14.54	-10.86	8.97	40.92	-45.03	17.71	29.39
<i>International Equity Policy Index</i>	<i>-8.47</i>	<i>-3.71</i>	<i>-4.30</i>	<i>17.30</i>	<i>17.57</i>	<i>-13.32</i>	<i>9.92</i>	<i>40.25</i>	<i>-45.30</i>	<i>16.86</i>	<i>28.01</i>
Excess Return	0.80	1.69	0.92	3.96	-3.03	2.46	-0.95	0.67	0.27	0.85	1.38
Fixed Income Composite	0.66	-0.49	5.61	-1.78	7.32	5.84	8.50	11.30	4.56	7.80	4.35
<i>Barclays Aggregate</i>	<i>2.10</i>	<i>0.55</i>	<i>5.97</i>	<i>-2.02</i>	<i>4.21</i>	<i>7.84</i>	<i>6.54</i>	<i>5.93</i>	<i>5.24</i>	<i>6.97</i>	<i>4.34</i>
Excess Return	-1.44	-1.04	-0.36	0.24	3.11	-2.00	1.96	5.37	-0.68	0.83	0.01
Alternatives Composite	0.50	8.78	11.20	13.01	8.65	7.29	-9.68	-	-	-	-
<i>Alternatives Policy Index</i>	<i>-0.14</i>	<i>9.42</i>	<i>14.60</i>	<i>13.91</i>	<i>11.19</i>	<i>10.39</i>	<i>19.72</i>	<i>-</i>	<i>-</i>	<i>-</i>	<i>-</i>
Excess Return	0.64	-0.64	-3.40	-0.90	-2.54	-3.10	-29.40	-	-	-	-
<i>Alternatives Allocation Index</i>	<i>-0.12</i>	<i>10.37</i>	<i>13.64</i>	<i>13.41</i>	<i>11.00</i>	<i>11.31</i>	<i>13.45</i>	<i>-</i>	<i>-</i>	<i>-</i>	<i>-</i>
Private Equity Composite	-0.29	5.46	17.49	16.67	11.75	6.39	23.57	-	-	-	-
Real Estate/Real Assets Composite	1.02	10.86	8.08	10.60	6.67	7.64	-9.88	2.82	-	-	-
Total Cash Composite	0.11	0.31	0.23	0.16	0.28	0.53	0.24	0.51	-3.65	5.29	5.40
<i>90 Day US Treasury Bill</i>	<i>0.01</i>	<i>0.03</i>	<i>0.04</i>	<i>0.05</i>	<i>0.08</i>	<i>0.08</i>	<i>0.13</i>	<i>0.17</i>	<i>2.10</i>	<i>4.91</i>	<i>4.76</i>
Excess Return	0.10	0.28	0.19	0.11	0.20	0.45	0.11	0.34	-5.75	0.38	0.64

El Paso Firemen and Policemen's Pension Fund

Manager Asset Allocation & Performance

February 29, 2016

	Asset \$	Asset %	Performance(%)						Since Inception	Inception Date
			1 Month	3 Month	CYTD	1 Year	3 Year	5 Year		
Domestic Equity Portfolios										
INTECH	139,154,535	11.69	0.45	-5.93	-4.88	-5.60	12.48	11.47	7.55	Jun-2006
<i>S&P 500</i>			-0.13	-6.59	-5.09	-6.19	10.75	10.13	6.65	
Excess Return			0.58	0.66	0.21	0.59	1.73	1.34	0.90	
Cooke & Bieler	66,468,147	5.59	1.74	-5.84	-3.81	-7.47	10.48	9.53	6.89	Aug-2005
<i>Russell 1000 Value Index</i>			-0.03	-7.23	-5.19	-9.41	8.27	8.81	5.50	
Excess Return			1.77	1.39	1.38	1.94	2.21	0.72	1.39	
Brown Investment Advisory	72,507,702	6.09	-0.69	-9.25	-7.59	-4.52	9.14	-	8.52	Apr-2012
<i>Russell 1000 Growth Index</i>			-0.04	-7.01	-5.62	-5.05	12.54	-	11.14	
Excess Return			-0.65	-2.24	-1.97	0.53	-3.40	-	-2.62	
Cooke & Bieler Small Cap Value	19,161,468	1.61	-0.09	-11.61	-6.48	-8.88	-	-	-1.56	Aug-2014
<i>Russell 2000 Value Index</i>			0.68	-11.03	-6.08	-13.35	-	-	-4.80	
Excess Return			-0.77	-0.58	-0.40	4.47	-	-	3.24	
William Blair Small Cap Value	41,197,962	3.46	0.93	-9.72	-4.83	-9.17	-	-	-0.38	Aug-2014
<i>Russell 2000 Value Index</i>			0.68	-11.03	-6.08	-13.35	-	-	-4.80	
Excess Return			0.25	1.31	1.25	4.18	-	-	4.42	
William Blair Small Cap Growth	24,660,228	2.07	0.68	-10.40	-8.69	-13.64	9.19	8.30	11.08	Oct-2010
<i>Russell 2000 Growth Index</i>			-0.71	-15.69	-11.47	-16.65	7.05	6.90	10.55	
Excess Return			1.39	5.29	2.78	3.01	2.14	1.40	0.53	
International Equity Portfolios										
Mondrian	132,799,890	11.16	-1.25	-7.05	-5.44	-14.31	2.81	1.99	5.87	Jun-2009
<i>MSCI EAFE Index (Net)</i>			-1.83	-10.16	-8.93	-15.18	0.38	0.56	5.35	
Excess Return			0.58	3.11	3.49	0.87	2.43	1.43	0.52	
Pyramis	92,240,332	7.75	-3.32	-9.98	-8.98	-12.28	1.78	1.81	7.55	Nov-2002
<i>MSCI EAFE Index (Net)</i>			-1.83	-10.16	-8.93	-15.18	0.38	0.56	6.61	
Excess Return			-1.49	0.18	-0.05	2.90	1.40	1.25	0.94	
DFA International Small Cap	49,899,567	4.19	-0.87	-8.55	-8.19	-10.59	4.33	2.90	5.37	Apr-2010
<i>MSCI EAFE Small Cap (Net)</i>			-0.12	-7.30	-7.97	-5.45	5.22	3.94	6.56	
Excess Return			-0.75	-1.25	-0.22	-5.14	-0.89	-1.04	-1.19	
Baillie Gifford	62,617,983	5.26	-2.91	-12.30	-9.86	-21.90	-5.01	-3.86	6.88	Apr-2005
<i>MSCI Emerging Markets (Net)</i>			-0.16	-8.72	-6.64	-23.41	-8.90	-5.41	5.28	
Excess Return			-2.75	-3.58	-3.22	1.51	3.89	1.55	1.60	

El Paso Firemen and Policemen's Pension Fund

Manager Asset Allocation & Performance

February 29, 2016

	Asset \$	Asset %	Performance(%)						Since Inception	Inception Date
			1 Month	3 Month	CYTD	1 Year	3 Year	5 Year		
Fixed Income Portfolios										
NTQA	100,762,174	8.47	0.69	1.75	2.12	1.55	2.23	3.63	5.27	Jan-1998
<i>Barclays Aggregate</i>			<i>0.71</i>	<i>1.77</i>	<i>2.10</i>	<i>1.50</i>	<i>2.22</i>	<i>3.60</i>	<i>5.27</i>	
Excess Return			-0.02	-0.02	0.02	0.05	0.01	0.03	0.00	
PIMCO Total Return	195,790,447	16.45	0.08	0.65	0.95	-0.80	1.40	3.50	5.47	May-2003
<i>Barclays Aggregate</i>			<i>0.71</i>	<i>1.77</i>	<i>2.10</i>	<i>1.50</i>	<i>2.22</i>	<i>3.60</i>	<i>4.35</i>	
Excess Return			-0.63	-1.12	-1.15	-2.30	-0.82	-0.10	1.12	
Western Asset Management Company Floating Rate	60,702,141	5.10	-0.83	-3.83	-2.55	-6.98	-	-	-4.84	Jan-2015
<i>S&P/LSTA Leverage Loan Index</i>			<i>-0.53</i>	<i>-2.21</i>	<i>-1.18</i>	<i>-3.54</i>	<i>-</i>	<i>-</i>	<i>-1.59</i>	
Excess Return			-0.30	-1.62	-1.37	-3.44	-	-	-3.25	
Private Equity										
KPS Capital Partners	1,496,516	0.13	0.00	-3.45	0.00	33.03	47.65	22.04	16.76	Sep-2009
Riverside	1,647,873	0.14	0.58	2.66	0.18	18.69	9.82	2.72	-2.38	May-2010
Blackstone/GSO Capital Solutions	820,247	0.07	0.00	-1.09	-0.37	-3.42	13.59	12.72	12.70	Jul-2010
Lexington Capital	6,889,473	0.58	-0.30	-0.30	-0.30	13.39	15.82	14.49	17.83	Aug-2010
Veritas	4,397,810	0.37	0.00	0.00	0.00	-3.46	20.41	13.95	13.24	Dec-2010
Newstone	1,311,158	0.11	0.00	0.00	0.00	25.33	13.28	11.22	10.77	Jan-2011
EnCap Fund VIII	890,798	0.07	-0.49	-0.49	-0.49	-34.03	-5.69	-0.11	-0.11	Mar-2011
Waud Capital Partners Fund III	2,081,727	0.17	1.26	0.21	0.21	9.10	16.85	-	20.26	Apr-2011
Centerbridge II	2,725,699	0.23	0.00	-0.66	0.00	-3.52	3.29	-	0.37	Jun-2011
Capital International VI	898,488	0.08	0.00	-1.83	-1.83	-23.67	-16.02	-	-19.77	Jul-2011
American Securities VI	1,979,094	0.17	0.00	-0.55	-0.55	17.95	30.44	-	18.46	Feb-2012
Global Infrastructure Partners II	1,557,313	0.13	0.00	-1.50	-1.50	11.52	31.21	-	24.84	Jun-2012
Hancock Capital Partners	1,226,029	0.10	0.00	-0.72	-0.72	3.28	-4.88	-	-4.38	Nov-2012
Audax PE Fund IV	3,026,448	0.25	-0.11	-0.11	-0.11	15.20	15.32	-	14.45	Jan-2013
Riverside V	779,569	0.07	0.00	0.00	0.00	-16.27	-20.52	-	-29.01	Feb-2013
EnCap Fund IX	903,289	0.08	0.00	-0.00	0.00	-17.68	-247.62	-	-247.62	Mar-2013
Trilantic Capital Partners V	1,640,504	0.14	0.00	-2.18	0.00	-12.64	-	-	-13.63	Dec-2013

El Paso Firemen and Policemen's Pension Fund

Manager Asset Allocation & Performance

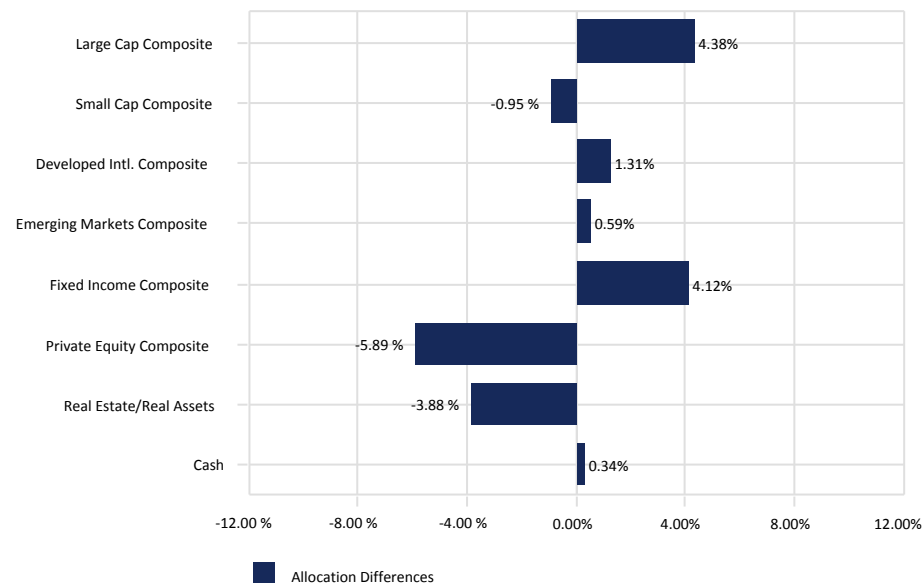
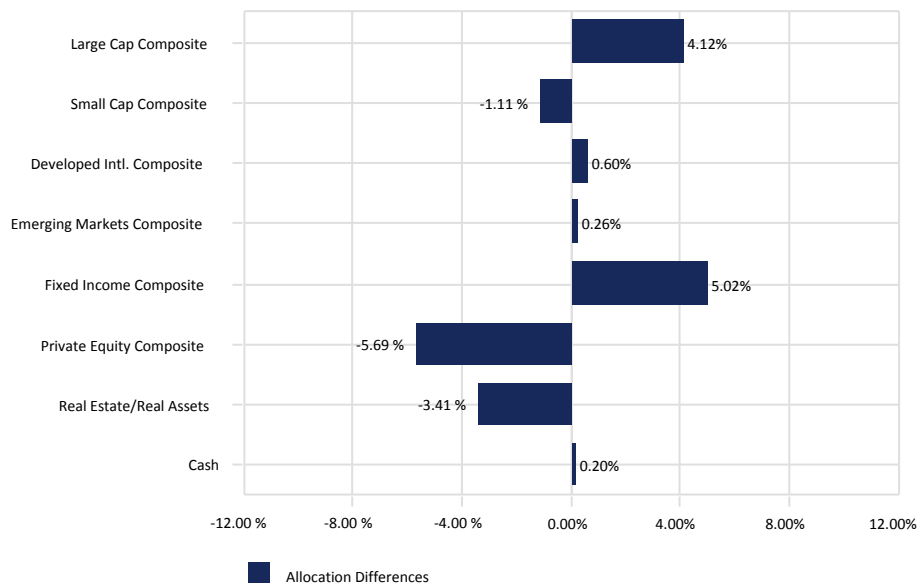
February 29, 2016

	Asset \$	Asset %	Performance(%)							Since Inception	Inception Date
			1 Month	3 Month	CYTD	1 Year	3 Year	5 Year			
Private Equity (continued)											
KPS Special Situations IV	202,349	0.02	0.00	-4.17	0.00	24.09	-	-	7.54	May-2014	
Sentinel Capital Partners V	1,517,450	0.13	-0.07	-0.07	-0.07	8.07	-	-	3.63	Jul-2014	
Riverside MicroCap Fund III	2,776,867	0.23	0.00	0.00	0.00	25.74	-	-	12.51	Jul-2014	
Vista Equity Partners V	3,675,500	0.31	-0.28	-1.22	-1.22	7.45	-	-	-20.59	Sep-2014	
Charlesbank Equity VIII	2,072,185	0.17	0.00	-1.31	-1.31	9.64	-	-	2.62	Jan-2015	
Insight Venture Partners Buyout	1,850,348	0.16	0.00	0.31	0.00	-	-	-	-4.59	May-2015	
Centerbridge III	876,289	0.07	0.00	-1.44	0.00	-	-	-	-6.53	May-2015	
Veritas V	4,011,790	0.34	0.00	0.00	0.00	-	-	-	-9.87	Jun-2015	
Real Estate											
Invesco Core Real Estate	8,431,487	0.71	0.00	2.22	2.22	13.51	12.46	-	11.07	Nov-2011	
Metropolitan Real Estate III	10,545,607	0.89	0.00	2.19	0.00	17.14	14.97	7.58	-1.06	Jun-2009	
Partners Group 2008	6,577,680	0.55	-0.58	1.86	-0.96	2.28	-0.41	2.97	1.98	Jul-2009	
Metropolitan Real Estate V	3,559,771	0.30	0.00	0.69	0.00	13.62	9.92	-	0.05	Jan-2012	
Partners Group 2011	6,931,053	0.58	3.53	7.92	3.14	9.82	5.23	-	6.24	Jul-2012	
Principal Real Estate	35,077,684	2.95	0.81	2.53	1.19	13.20	-	-	13.21	Nov-2013	
Partners Group 2014	7,243,125	0.61	0.60	0.60	0.60	10.40	-	-	3.79	Jun-2014	
Cash											
Cash	2,316,530	0.19	0.06	0.15	0.11	0.41	0.29	0.31	1.73	Apr-2002	
<i>90 Day US Treasury Bill</i>			<i>0.02</i>	<i>0.04</i>	<i>0.01</i>	<i>0.03</i>	<i>0.04</i>	<i>0.05</i>	<i>1.34</i>		
Excess Return			0.04	0.11	0.10	0.38	0.25	0.26	0.39		
Fiduciary Education	102,486	0.01	0.04	0.10	0.08	0.11	0.03	0.09	1.54	Apr-2002	
<i>90 Day US Treasury Bill</i>			<i>0.02</i>	<i>0.04</i>	<i>0.01</i>	<i>0.03</i>	<i>0.04</i>	<i>0.05</i>	<i>1.34</i>		
Excess Return			0.02	0.06	0.07	0.08	-0.01	0.04	0.20		

El Paso Firemen and Policemen's Pension Fund

Asset Allocation vs. Working Target Allocation

February 29, 2016



February 29, 2016

	<u>Market Value</u> (\$)	<u>Allocation</u> (%)	<u>Target</u> (%)
Large Cap Composite	278,130,384	23.37	19.25
Small Cap Composite	85,019,658	7.14	8.25
Developed Intl. Composite	274,939,790	23.10	22.50
Emerging Markets Composite	62,617,983	5.26	5.00
Fixed Income Composite	357,254,762	30.02	25.00
Private Equity Composite	51,254,814	4.31	10.00
Real Estate/Real Assets	78,366,407	6.59	10.00
Cash	2,419,016	0.20	0.00
Total Fund	1,190,002,814	100.00	100.00

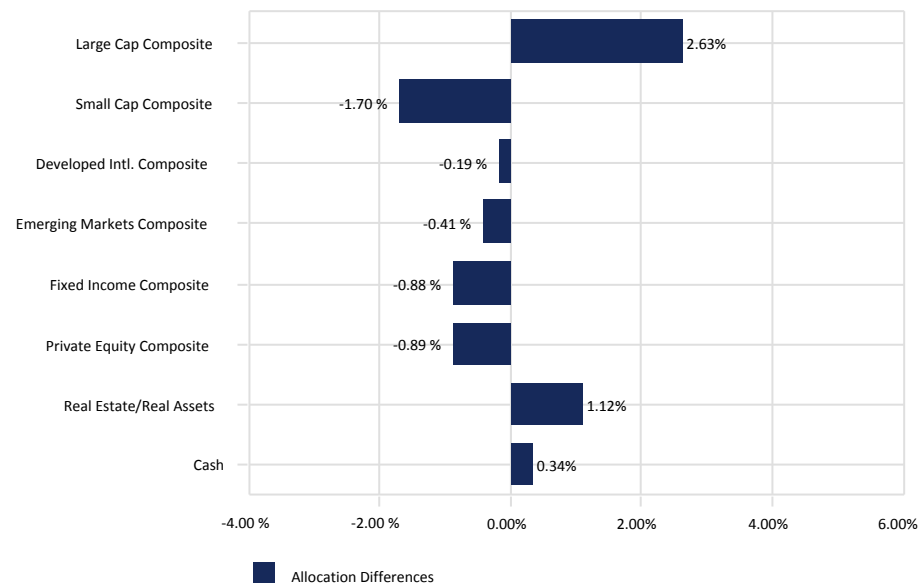
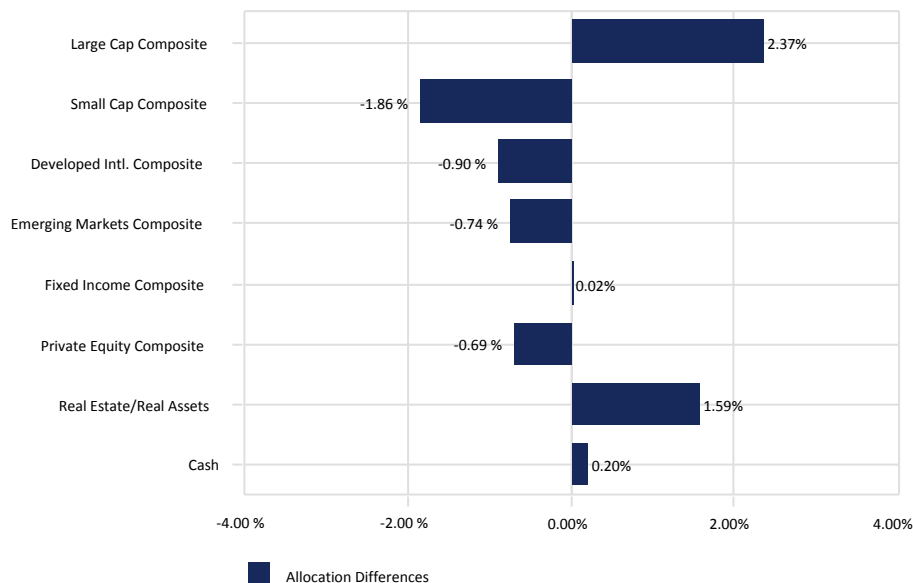
December 31, 2015

	<u>Market Value</u> (\$)	<u>Allocation</u> (%)	<u>Target</u> (%)
Large Cap Composite	293,863,323	23.63	19.25
Small Cap Composite	90,784,297	7.30	8.25
Developed Intl. Composite	296,125,015	23.81	22.50
Emerging Markets Composite	69,465,749	5.59	5.00
Fixed Income Composite	362,153,048	29.12	25.00
Private Equity Composite	51,111,996	4.11	10.00
Real Estate/Real Assets	76,067,478	6.12	10.00
Cash	4,171,114	0.34	0.00
Total Fund	1,243,742,020	100.00	100.00

El Paso Firemen and Policemen's Pension Fund

Asset Allocation vs. Target Allocation

February 29, 2016



February 29, 2016

	<u>Market Value</u> (\$)	<u>Allocation</u> (%)	<u>Target</u> (%)
Large Cap Composite	278,130,384	23.37	21.00
Small Cap Composite	85,019,658	7.14	9.00
Developed Intl. Composite	274,939,790	23.10	24.00
Emerging Markets Composite	62,617,983	5.26	6.00
Fixed Income Composite	357,254,762	30.02	30.00
Private Equity Composite	51,254,814	4.31	5.00
Real Estate/Real Assets	78,366,407	6.59	5.00
Cash	2,419,016	0.20	0.00
Total Fund	1,190,002,814	100.00	100.00

December 31, 2015

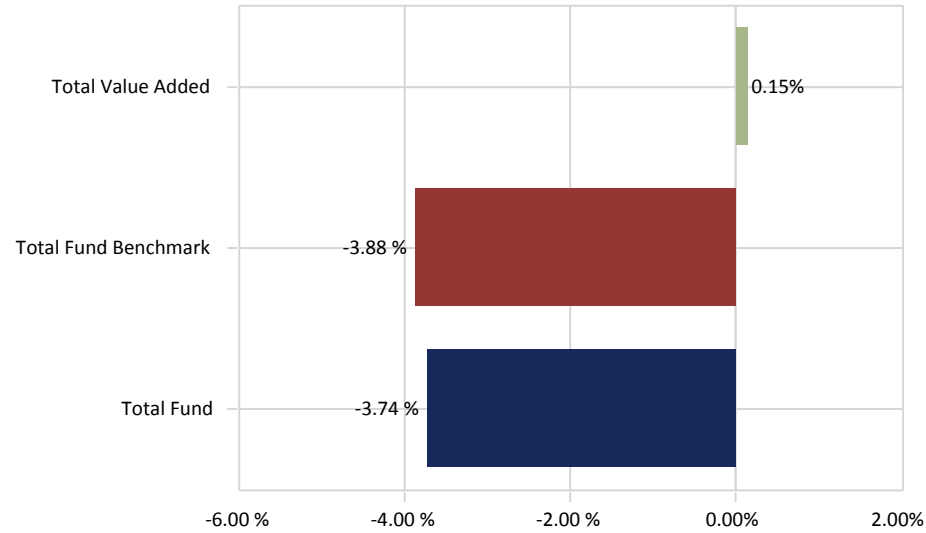
	<u>Market Value</u> (\$)	<u>Allocation</u> (%)	<u>Target</u> (%)
Large Cap Composite	293,863,323	23.63	21.00
Small Cap Composite	90,784,297	7.30	9.00
Developed Intl. Composite	296,125,015	23.81	24.00
Emerging Markets Composite	69,465,749	5.59	6.00
Fixed Income Composite	362,153,048	29.12	30.00
Private Equity Composite	51,111,996	4.11	5.00
Real Estate/Real Assets	76,067,478	6.12	5.00
Cash	4,171,114	0.34	0.00
Total Fund	1,243,742,020	100.00	100.00

El Paso Firemen and Policemen's Pension Fund

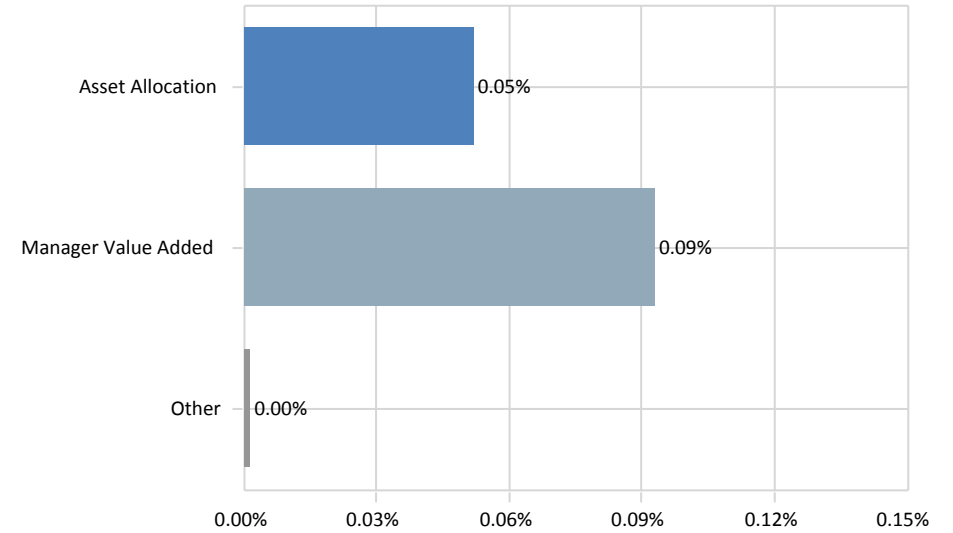
Total Fund Attribution

Year To Date Ending February 29, 2016

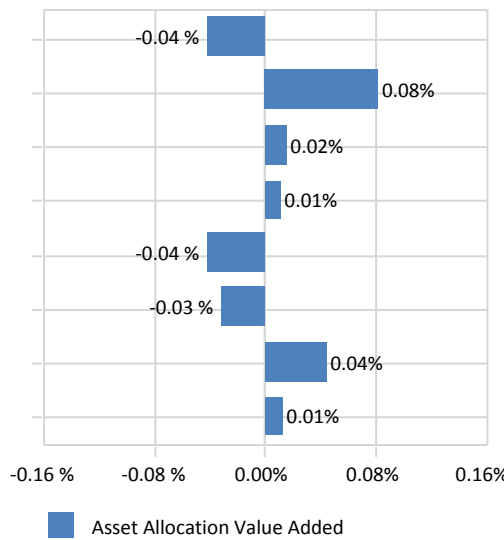
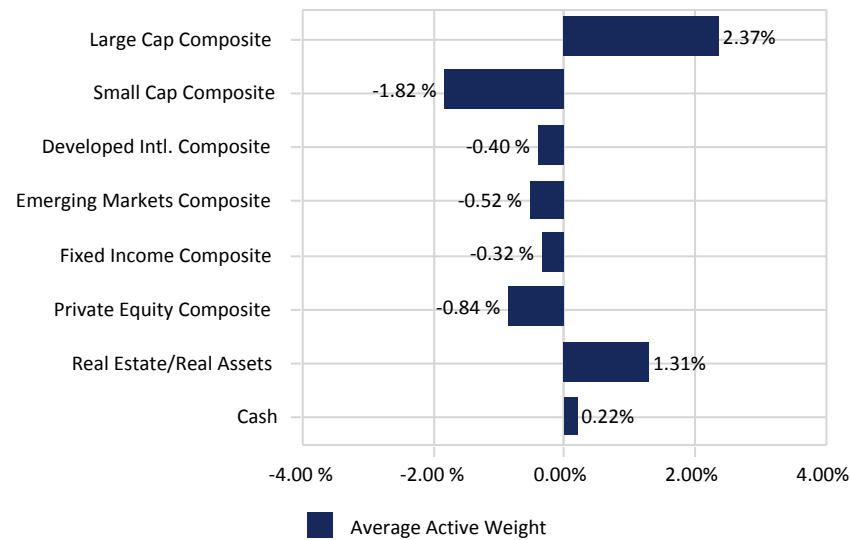
Total Fund Performance



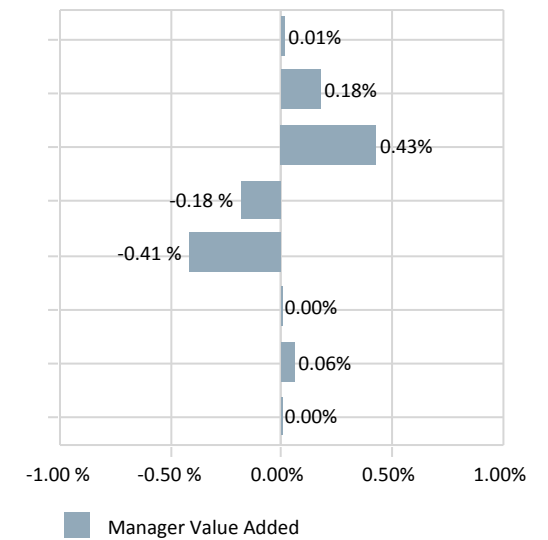
Total Value Added:0.15%



Total Asset Allocation:0.05%



Total Manager Value Added:0.09%



El Paso Firemen and Policemen's Pension Fund

Policy Compositions

As of February 29, 2016

Total Fund Policy	<u>(%)</u>
Dec-2015	
Russell 1000 Index	21.00
Russell 2000 Index	9.00
MSCI EAFE Index (Net)	24.00
MSCI Emerging Markets (Net)	6.00
Barclays Aggregate	30.00
Private Equity Composite	5.00
NCREIF Property Index	5.00
90 Day US Treasury Bill	0.00
US Equity Policy	<u>(%)</u>
Jan-2008	
Russell 1000 Index	70.00
Russell 2000 Index	30.00
International Equity Policy	<u>(%)</u>
Apr-2012	
MSCI EAFE Index (Net)	80.00
MSCI Emerging Markets (Net)	20.00
Fixed Income Policy	<u>(%)</u>
Oct-1995	
Barclays Aggregate	100.00
Alternatives Policy	<u>(%)</u>
Aug-2009	
NCREIF Property Index	50.00
Private Equity Composite	50.00

DISCLAIMER

Summit Strategies Group (Summit) has prepared this report for the exclusive use by the client for which it was prepared. The information herein was obtained from various sources, such as the client's custodian(s) accounting statements, commercially available databases, and other economic and financial market data sources. While Summit believes these sources to be reliable, Summit does not guarantee nor shall be liable for the market values, returns or other information contained in this report. The market commentary, portfolio holdings and characteristics are as of the date shown and are subject to change. Past performance is not an indication of future performance. No graph, chart, or formula can, in and of itself, be used to determine which securities or investments to buy or sell. Any forward-looking projection contained herein is based on assumptions that Summit believes may be reasonable, but are subject to a wide range of risks, uncertainties, and the possibility of loss. Accordingly, there is no assurance that any estimated performance figures will occur in the amounts and during the periods indicated, or at all. Actual results and performance will differ from those expressed or implied by such forward-looking projections. Any information contained in this report is for informational purposes only and should not be construed to be an offer to buy or sell any securities, investment consulting, or investment management services.